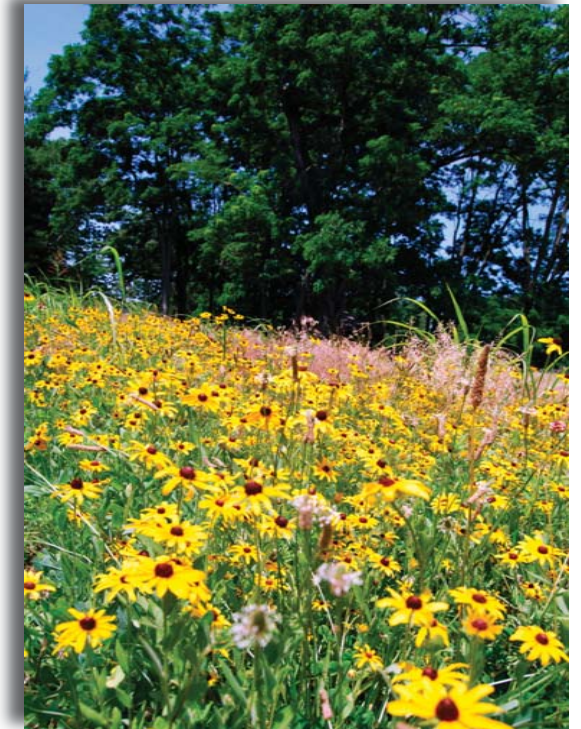
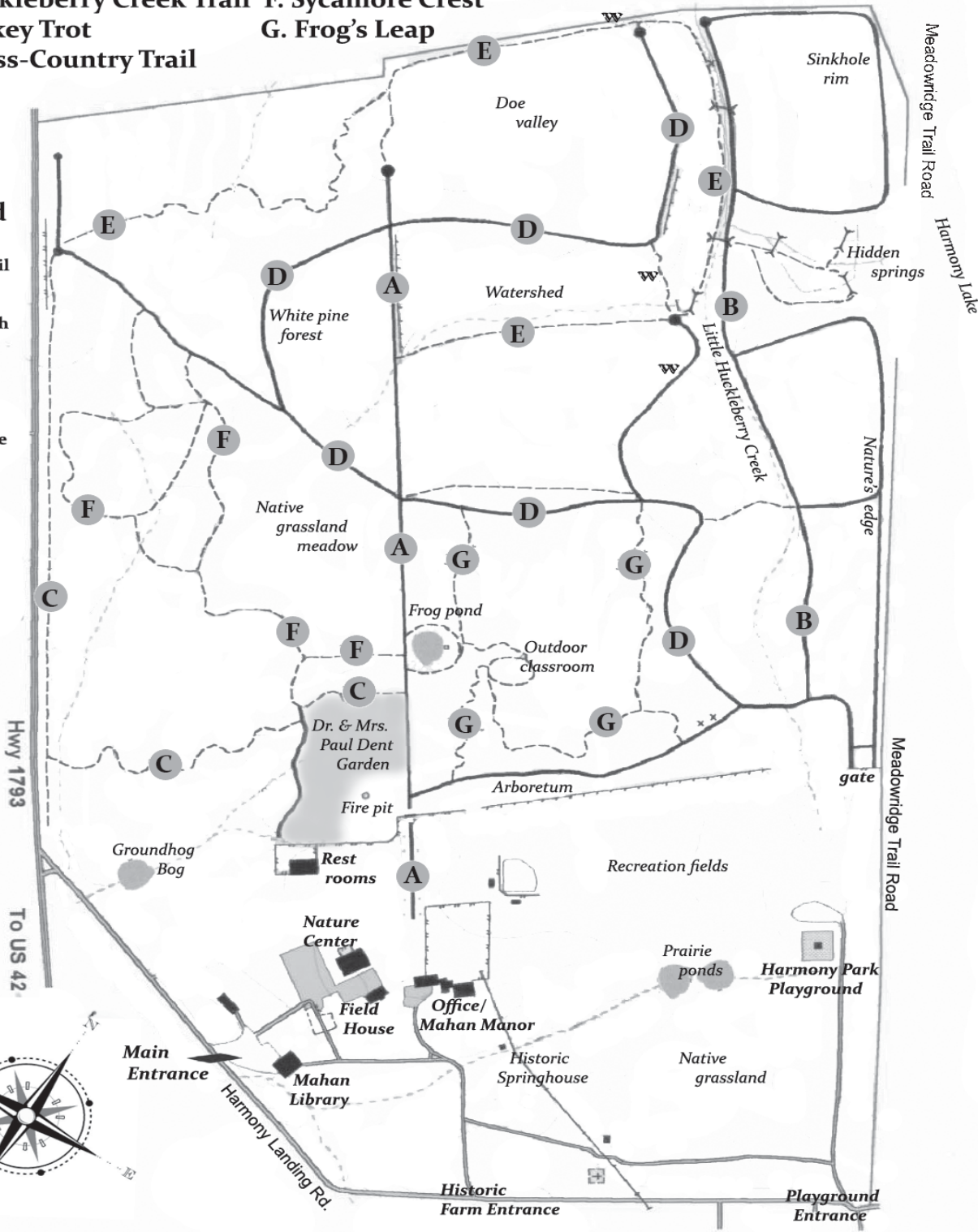


- A. Mahan Lane
- B. Huckleberry Creek Trail
- C. Turkey Trot
- D. Cross-Country Trail
- E. Watershed Trail
- F. Sycamore Crest
- G. Frog's Leap

# Creasey Mahan Nature Preserve Trail Guide

## Legend

- Forest Trail 
- Broad Path 
- Stream 
- Footbridge 
- Building 
- Waterfall 



12501 Harmony Landing Road  
 Goshen, KY 40026  
 (502) 228-4362  
[www.KYNaturePreserve.org](http://www.KYNaturePreserve.org)

*Bringing Nature & Community Together*



# History

In 1975, the Mahan family gifted their 170-acre farm to create the Creasey Mahan Nature Preserve. Once primarily horse pasture, with patches of woodland along waterways and ravines, Creasey Mahan Nature Preserve is now a living example of how good stewardship and community involvement can restore a healthy forest ecosystem.



# Trails

With 8.5 miles of winding trails, there is a walk for everyone! Hike through lush forests, white pine stands, native grass meadows, wetlands, springs, and meandering streams.

From quiet forest paths to broad grassy avenues, Creasey Mahan is ideal for local hiking, trail-running, and nature exploration. Benches and picnic tables provide ideal spots for birding, wildlife viewing, and picnicking. *Friendly dogs on leash are welcome (bring pick-up bags). No bikes allowed.*

**A. Mahan Lane**—Enjoy an easy stroll down the old farm-lane. Pass by the frog pond and take in the broad, open, native grass meadows. Provides access to several other trails. *Easy.*

**B. Huckleberry Creek Path**—Follows Little Huckleberry Creek between low wooded hills. The most mature part of the forest, be sure to visit the Hidden Springs wetland, where trickling streams merge and meander. *Moderate.*

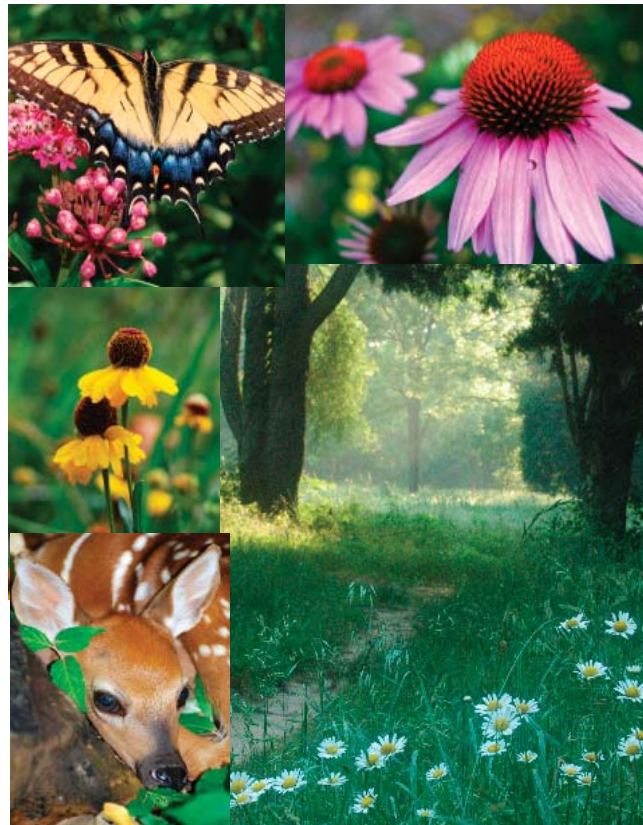
**C. Turkey Trot**—Winds through the woods from Mahan Lane to the forests edge, passes a sunny pond and hidden meadows. *Moderate.*

**D. Cross-Country Trail**—Broad grassy paths are perfect for trail-running. This trail climbs up and down hills to overlooks, past native meadows and pine stands. *Moderate.*

**E. Watershed Trail**—This favorite wildflower footpath travels through the most mature and delicate forest, down the shady side of Little Huckleberry Creek, and past stony waterfalls. *Moderate.*

**F. Sycamore Crest**—This multi-branched loop trail takes you past old sycamore trees, including a towering giant with four trunks! *Moderate.*

**G. Frog's Leap Trail**—The perfect trail for little ones, this nature exploration trail leads from the Frog Pond past the outdoor classroom and meanders in the forest. *Easy.*



# Ecology

Mature woodlands along streams and waterways, hills crowned with deciduous forests, sunny wildflower meadows and shady stony ravines--varied topography and stages of woodland growth makes the nature preserve a magical place to learn and explore. White-tailed deer, foxes, skunks, hawks, owls, rabbits, and an abundance of birds frequent the area, along with many more. CMNP is rich in diverse flora, and is working on ongoing native plant restoration. Stop by the office for more information and to find out about upcoming events, classes, and guided tours!

Be sure to check out the restored 200-year old historic spring house, Mahan Manor, and the old tobacco and dairy barn that now houses the Mahan Library.

Please walk softly, leave no trace, and respect the plants and animals you meet...

**Enjoy Your Visit!**

[www.KYNaturePreserve.org](http://www.KYNaturePreserve.org)